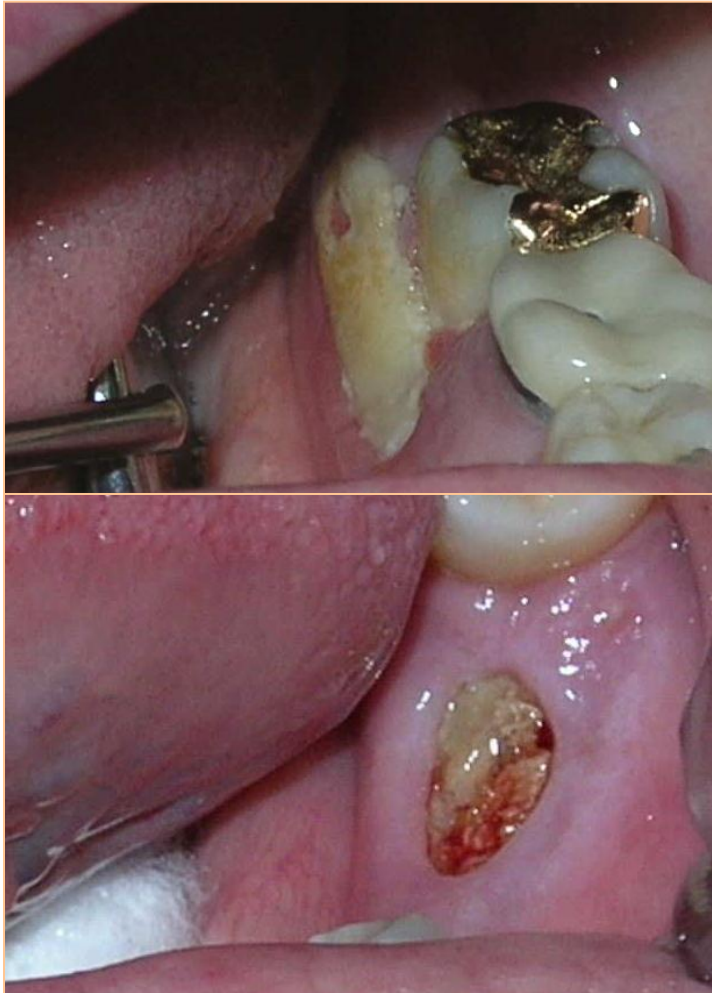


31) ผู้ป่วยหญิง อายุ 65 ปี เป็น IgA $\lambda$  MM stage IIb ได้รับการรักษาด้วย autologous stem cell transplant เมื่อ 3 เดือนก่อน ขณะนี้มีอาการปวดฟันกรามซ้ายล่าง

- A. Dexamethasone
- B. Zoledronic acid
- C. Actinomycosis
- D. Metastatic bone lesion
- E. Dental root abscess



# ONJ: Clinical Description



## Clinical Features of Suspected ONJ

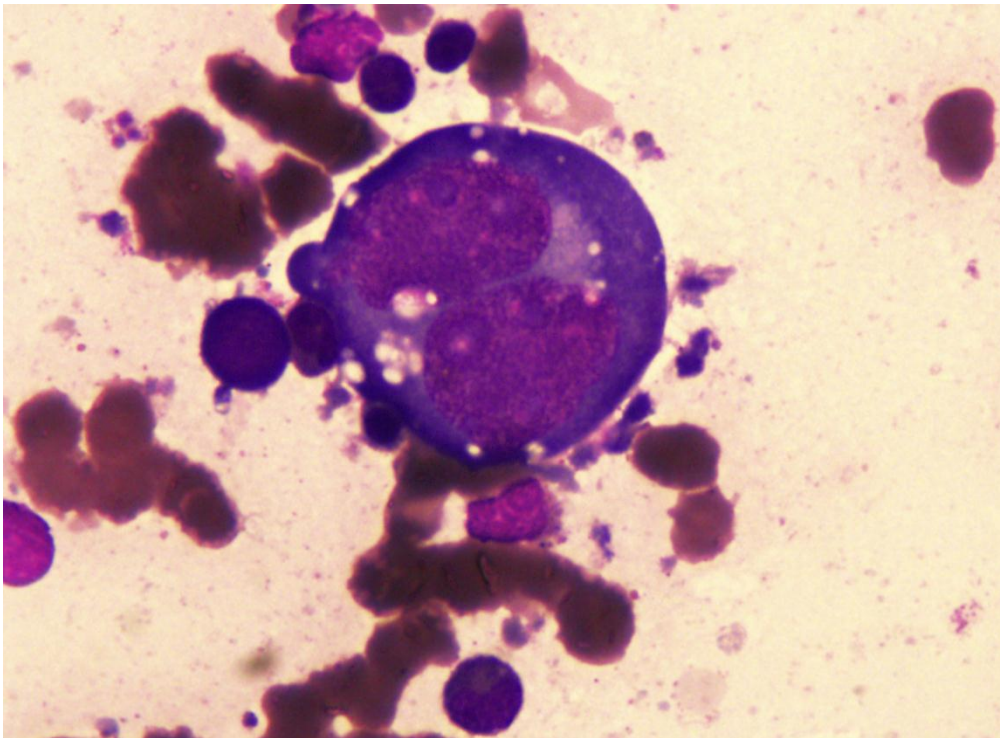
- Exposed bone in maxillofacial area that occurs in association with dental surgery or occurs spontaneously, with no evidence of healing\*

## Diagnosis of ONJ

- No evidence of healing after 6 weeks of appropriate evaluation and dental care
- No evidence of metastatic disease in the jaw or osteoradionecrosis
- Imaging (eg, panoramic and tomographic), biopsy, and cultures may be helpful

**\*Refer for appropriate dental evaluation and care as soon as possible**

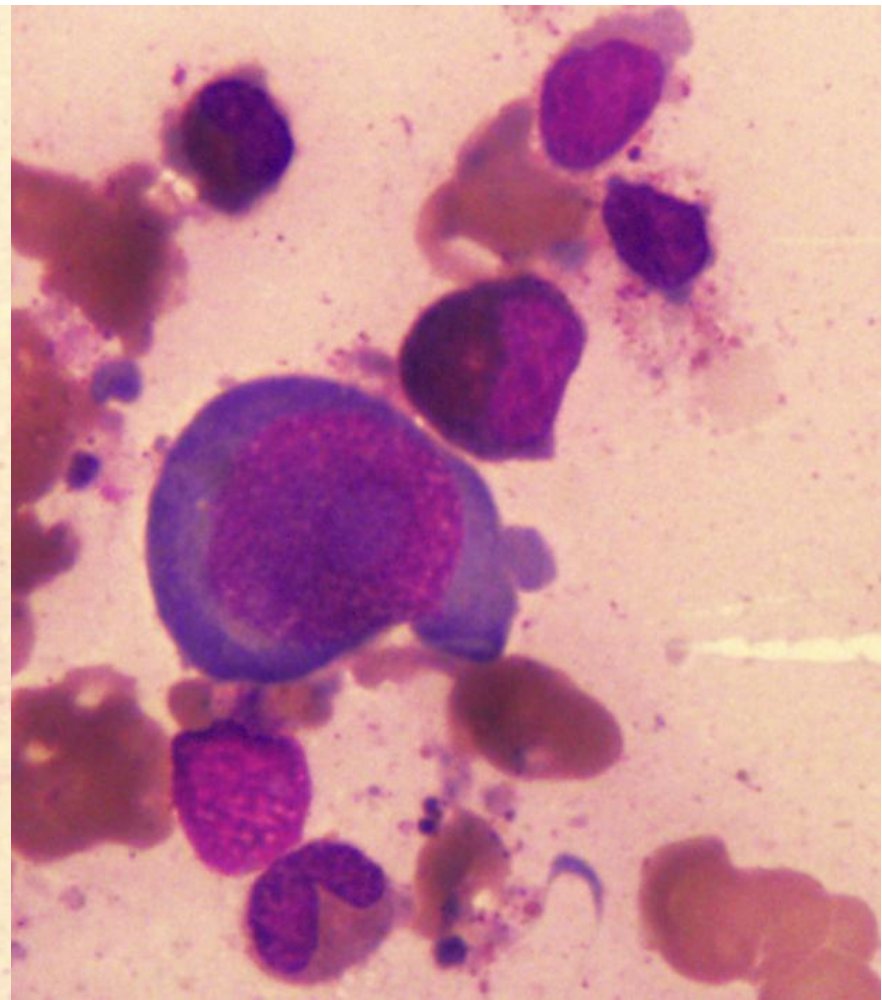
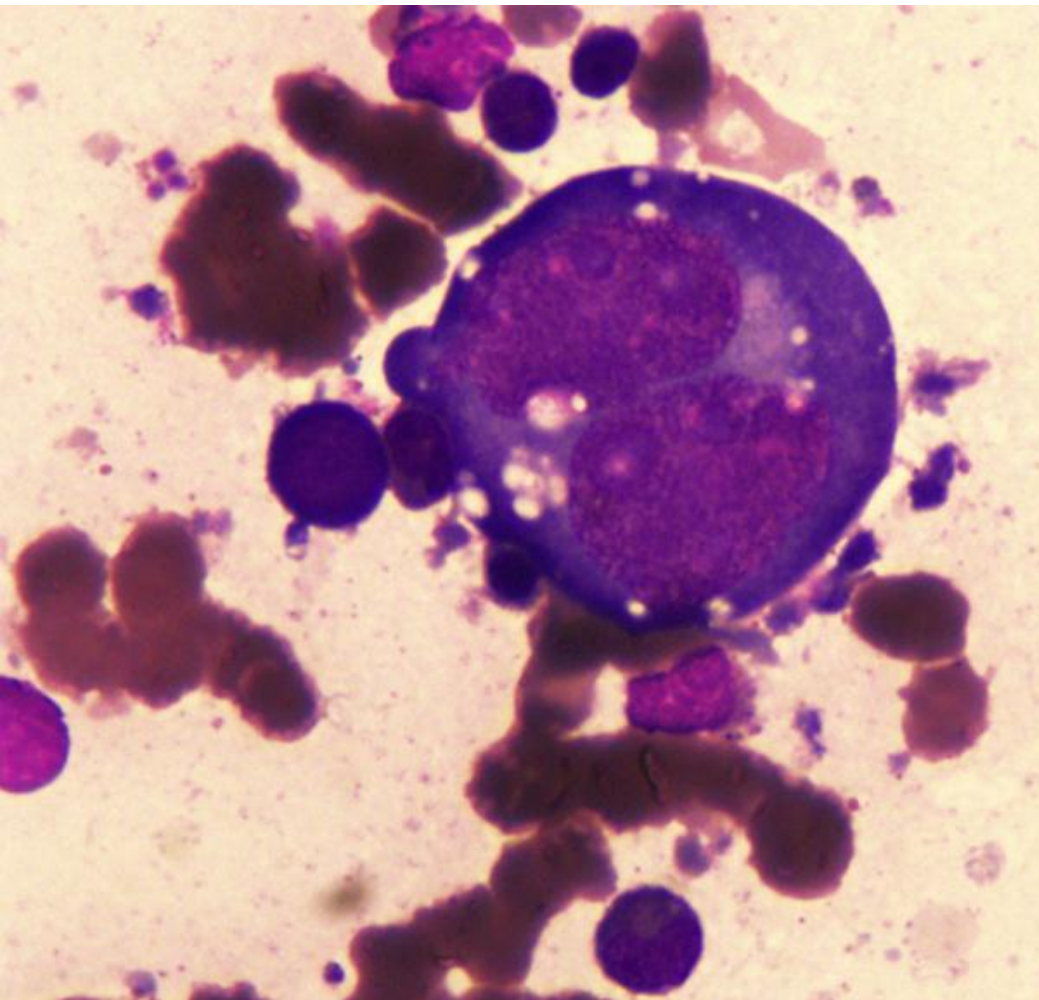
## 32. A 30-y-man with prolonged fever



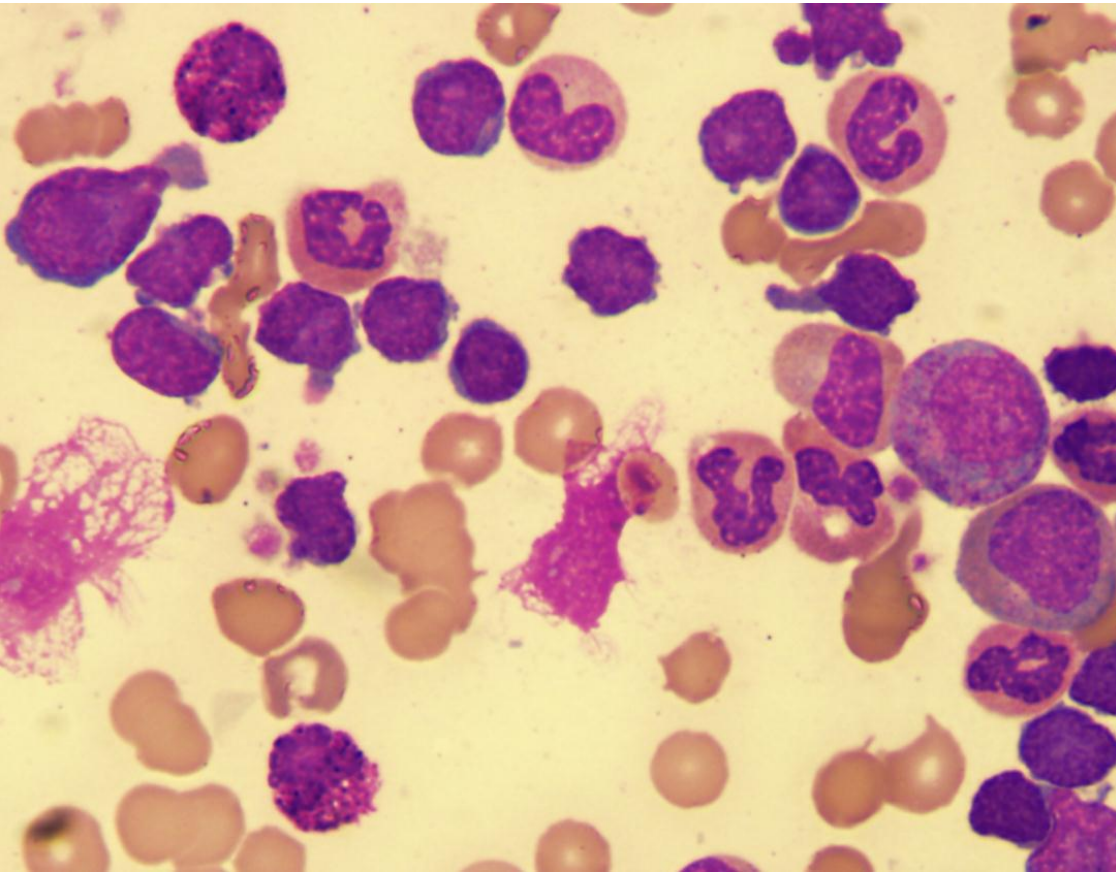
- A. Hodgkin lymphoma
- B. Parvovirus infection
- C. Anaplastic large cell lymphoma
- D. Diffuse large cell lymphoma
- E. Metastasis



# RS cell

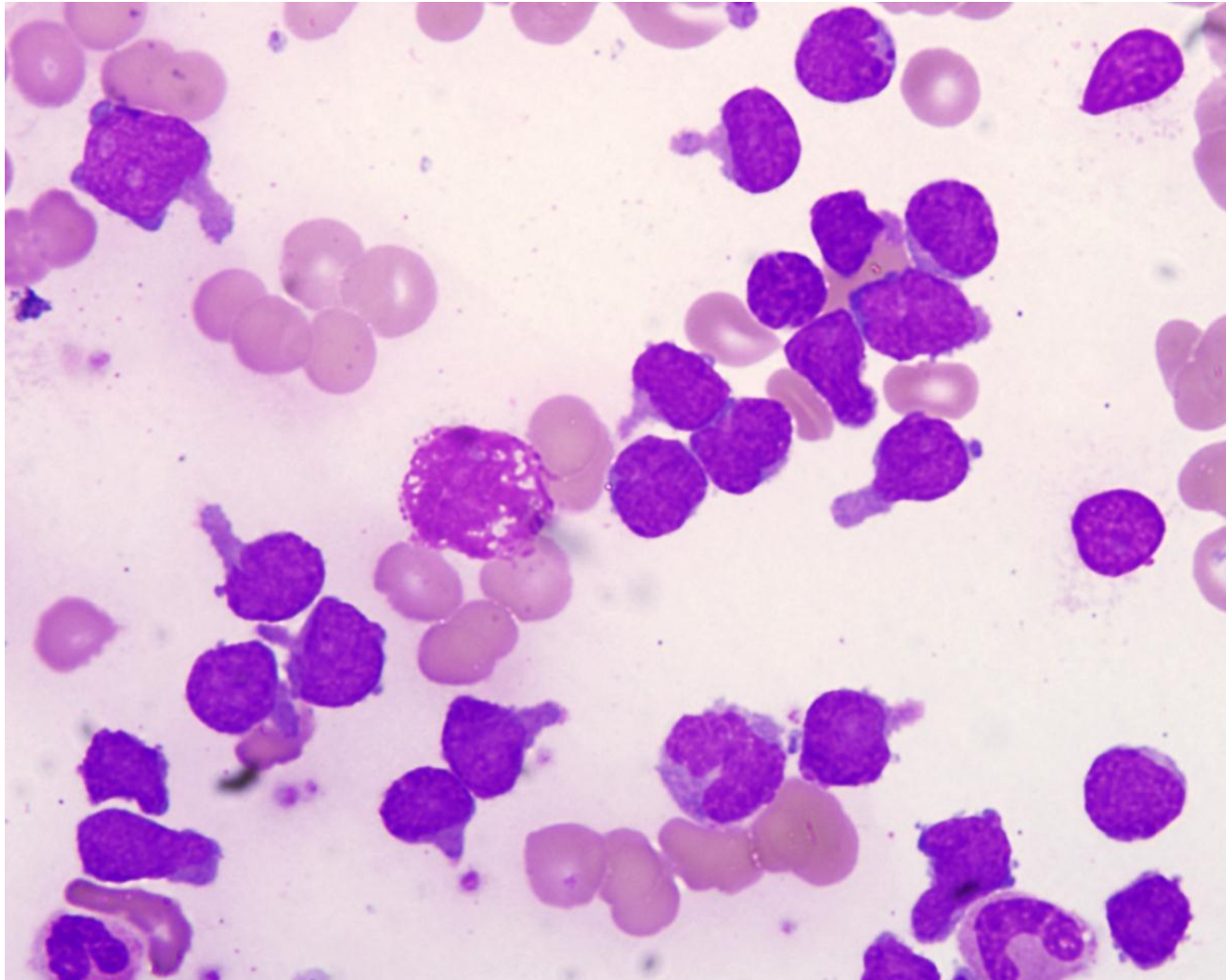


## 33. A 40-yr-old female with anemia and splenomegaly

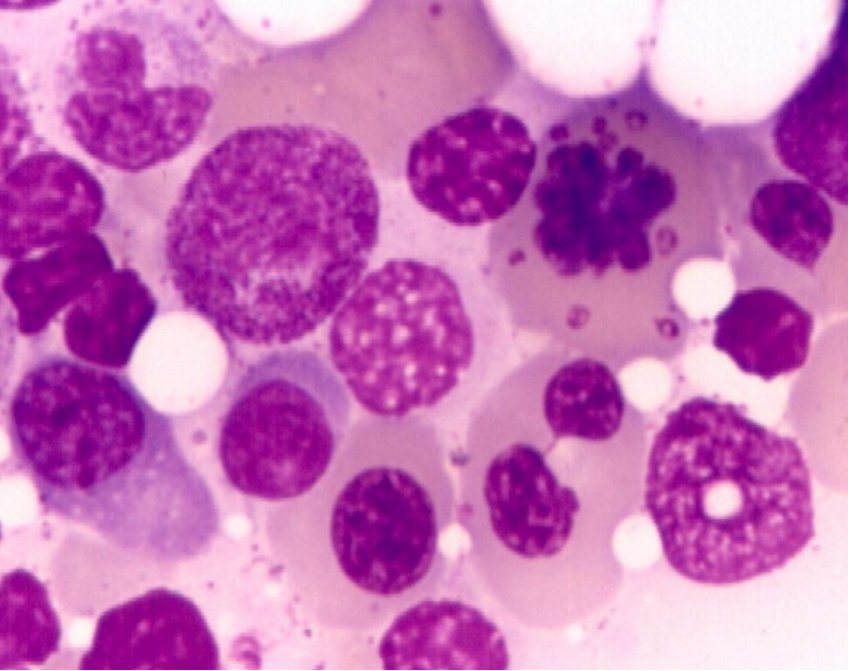


- A. CML chronic phase
- B. CML blast crisis
- C. ALL
- D. AML
- E. Mantle cell lymphoma

# CML lymphoid blast crisis or ALL?







**34. 65-yr-old female  
with anemia for 2 month**

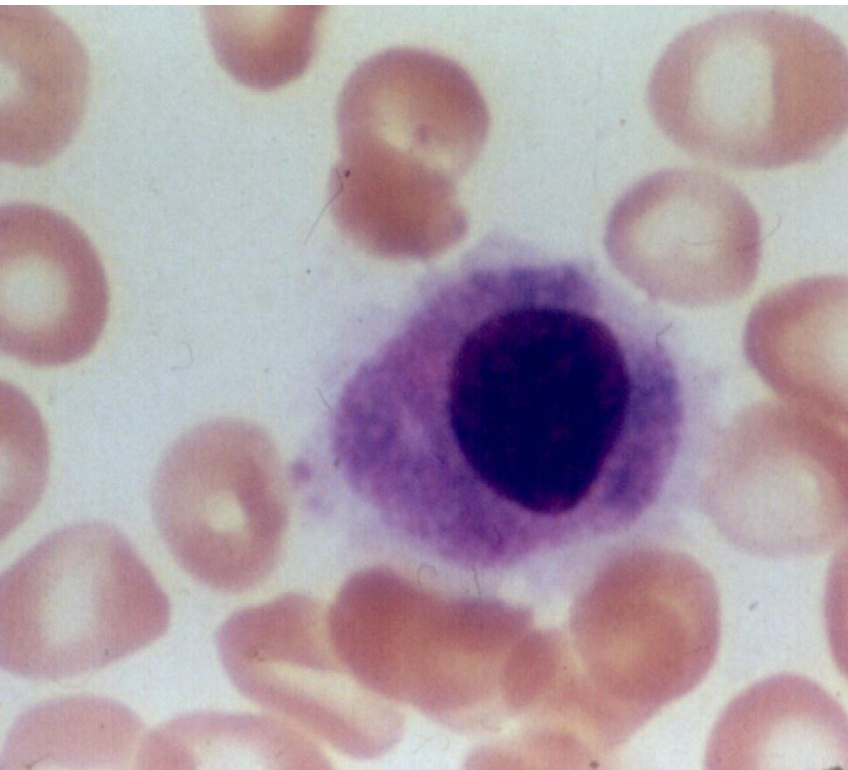
**A. Megaloblastic anemia**

**B. MDS**

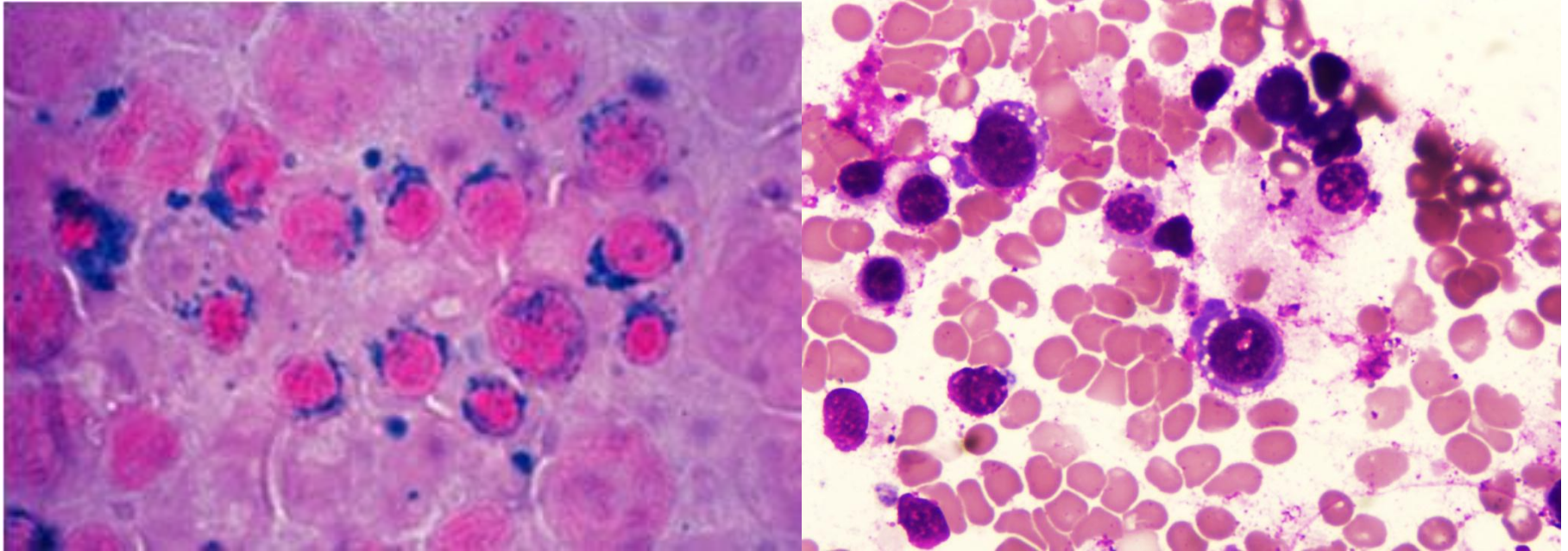
**C. Marrow metastasis**

**D. Fanconi anemia**

**E. AML-M7**



35. A 20-y-old man with Wilson's disease post-treatment developed pancytopenia



A. Copper toxicity

B. Liver failure

C. Copper deficiency

D. Vitamin B6 deficiency

E. Zinc deficiency



## 36. A 70-y-old female with multiple site bleeding



CBC (after massive transfusion)

Hb 11.9 g/dL, MCV 76 fL, RDW 18.9%  
WBC 5.83 Plt  $107 \times 10^9/L$

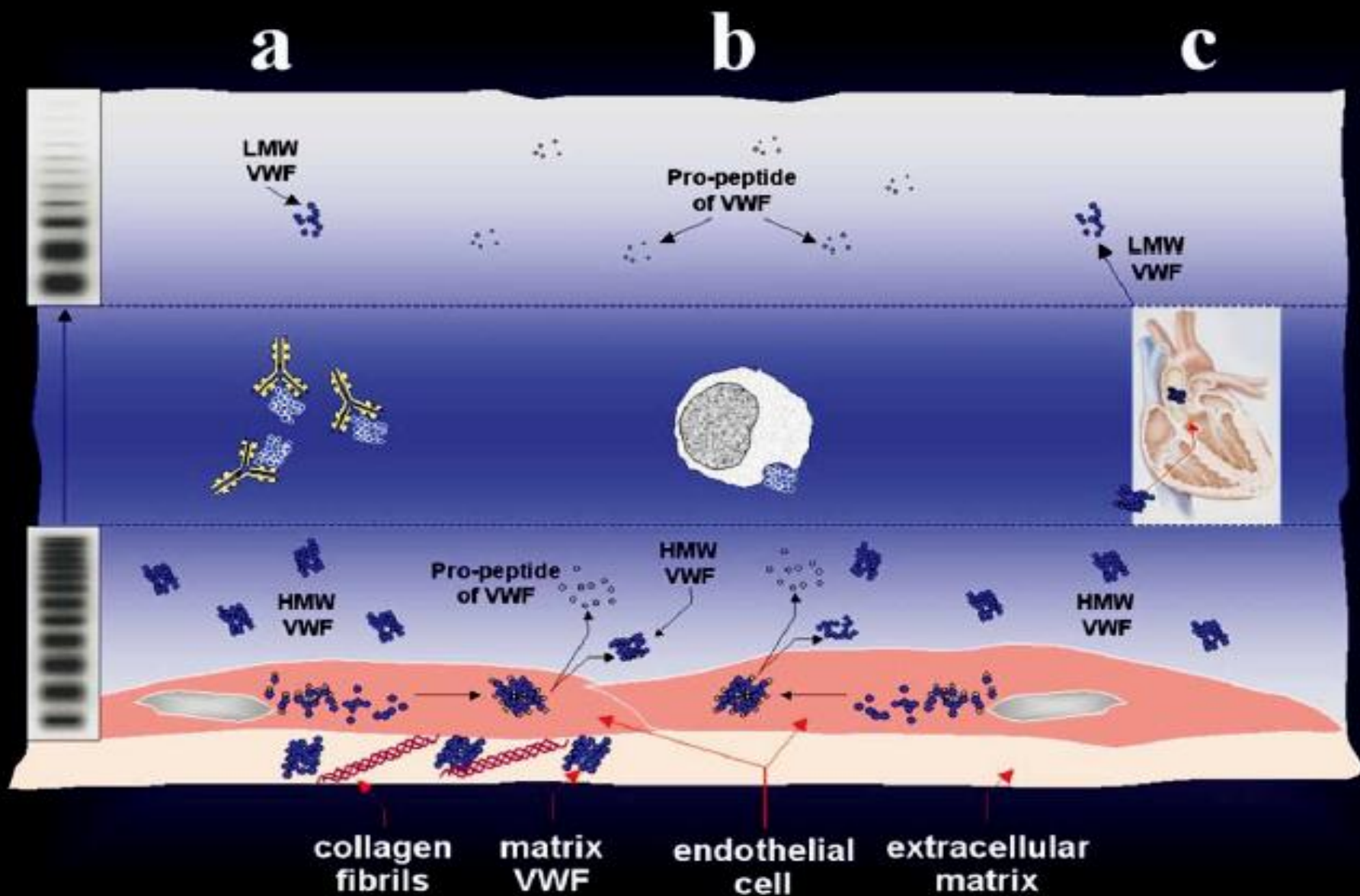
PT 15.7/12.8 PTT 35.1/30.9 TT 11/12

**Bleeding time over 20 min**

- A. Acquired VIII inhibitor**
- B. Dysproteinemia**
- C. Acquired vWD**
- D. Vitamin K deficiency**
- E. DIC**

# von Willebrand factor

- vWF Ag 77% (50-150)
- RiCof < 1.5% (50-150)
- Collagen binding activity <1.5% (50-150)
  
- Mixing patients plasma with normal plasma
- Repeat Collagen binding assay
  
- Mixing 1:4 still undetectable activity
- Inhibitor: positive

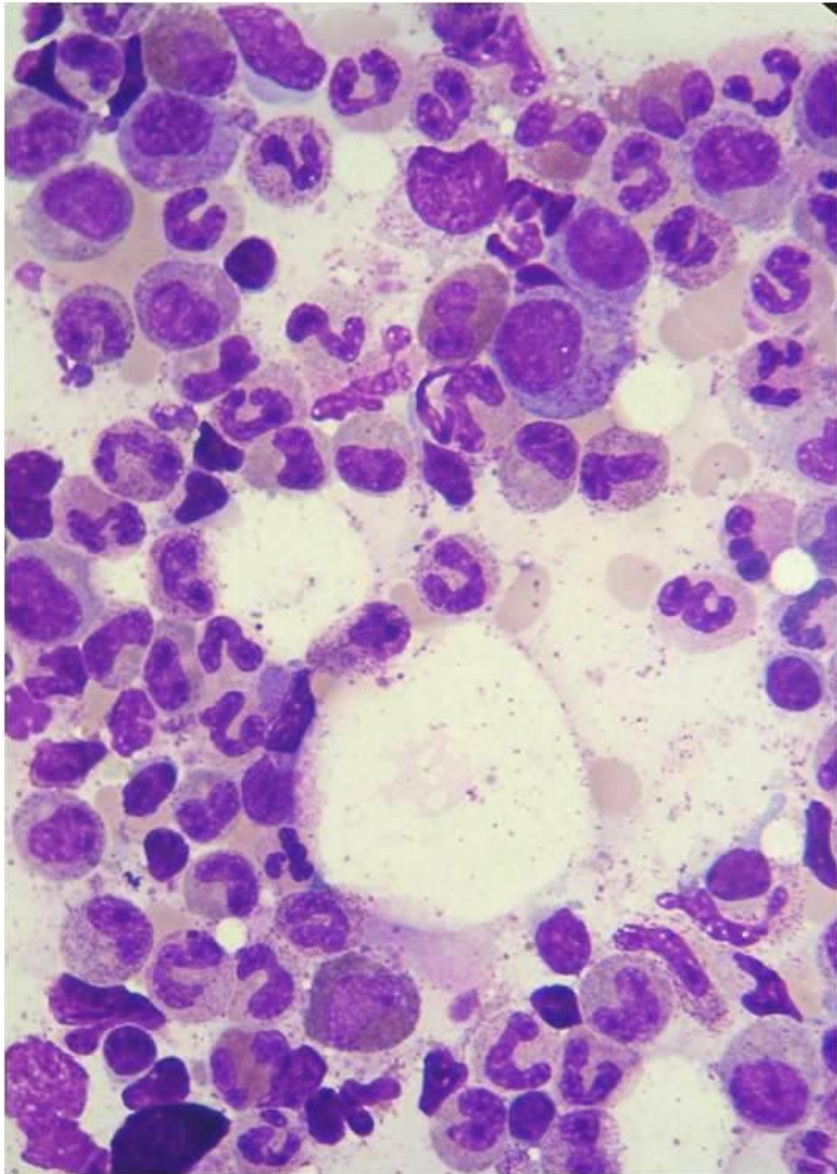




# Main underlying disorders associated with acquired vWD

- Lymphoproliferative disorders(30-50%): MGUS (most common 15-25%), MM, WM, NHL, CLL
- Myeloproliferative disorders: ET(15%), PV, PMF
- Solid tumors(5%)
- Immunologic disorders(5%): SLE, others
- Cardiovascular causes(10-20%): multiple or not defined, VSD, AS, angiodysplasia
- Miscellaneous(10-30%)
  - : drugs (Valproic acid, ciprofloxacin, griseofulvin)
  - : Hypothyroidism

## 37. A 60-yr-old male with chronic anemia.



- A. CML**
- B. MDS**
- C. Pure red cell aplasia**
- D. Megaloblastic anemia**
- E. Anemia of chronic disease**

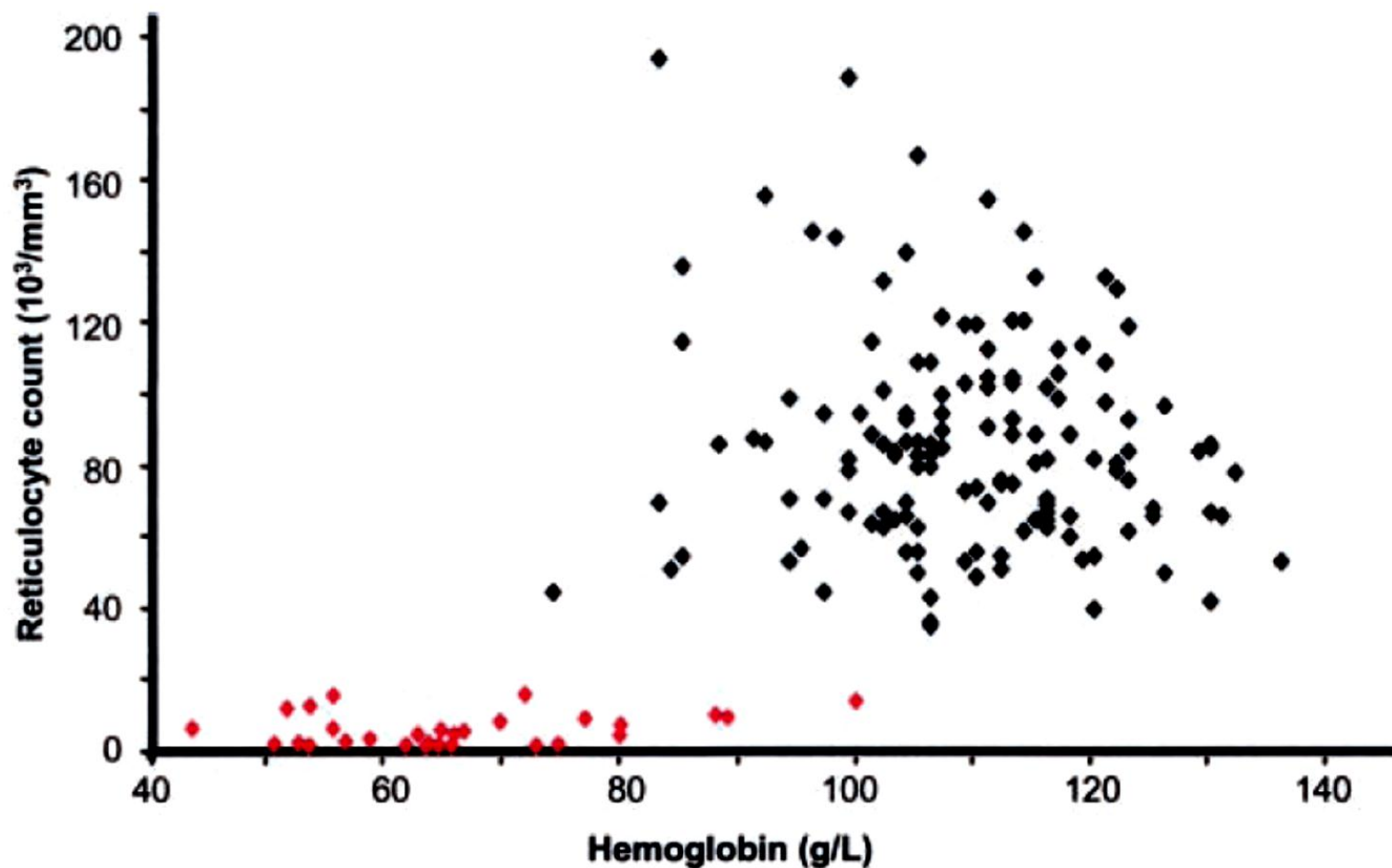
# Pure red cell aplasia

- **severe normocytic anemia, reticulocytopenia, and absence of erythroblasts from an otherwise normal bone marrow**
  - Lymphoproliferative disorders (e.g., LGL leukemia, CLL)
  - Infections (e.g., parvovirus B19)
  - Systemic autoimmune disease (e.g., systemic lupus)
  - Drugs (e.g., chloramphenicol, erythropoietin)
  - Thymoma (in 5% of cases)
  - Idiopathic (in 50% of cases)

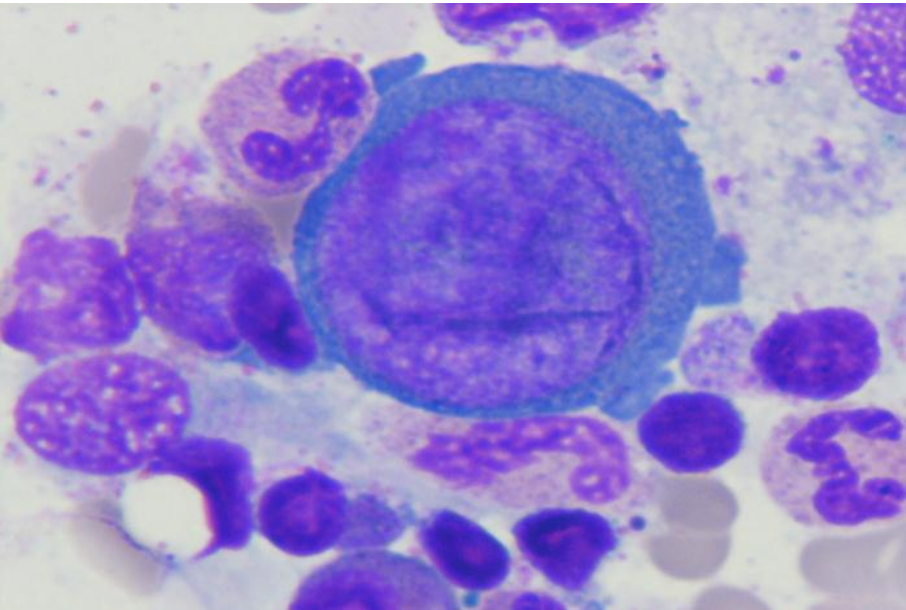


## Reticulocyte counts in PRCA

(usually  $< 10,000/\mu\text{L}$ , unlikely if  $> 20,000/\mu\text{L}$ )



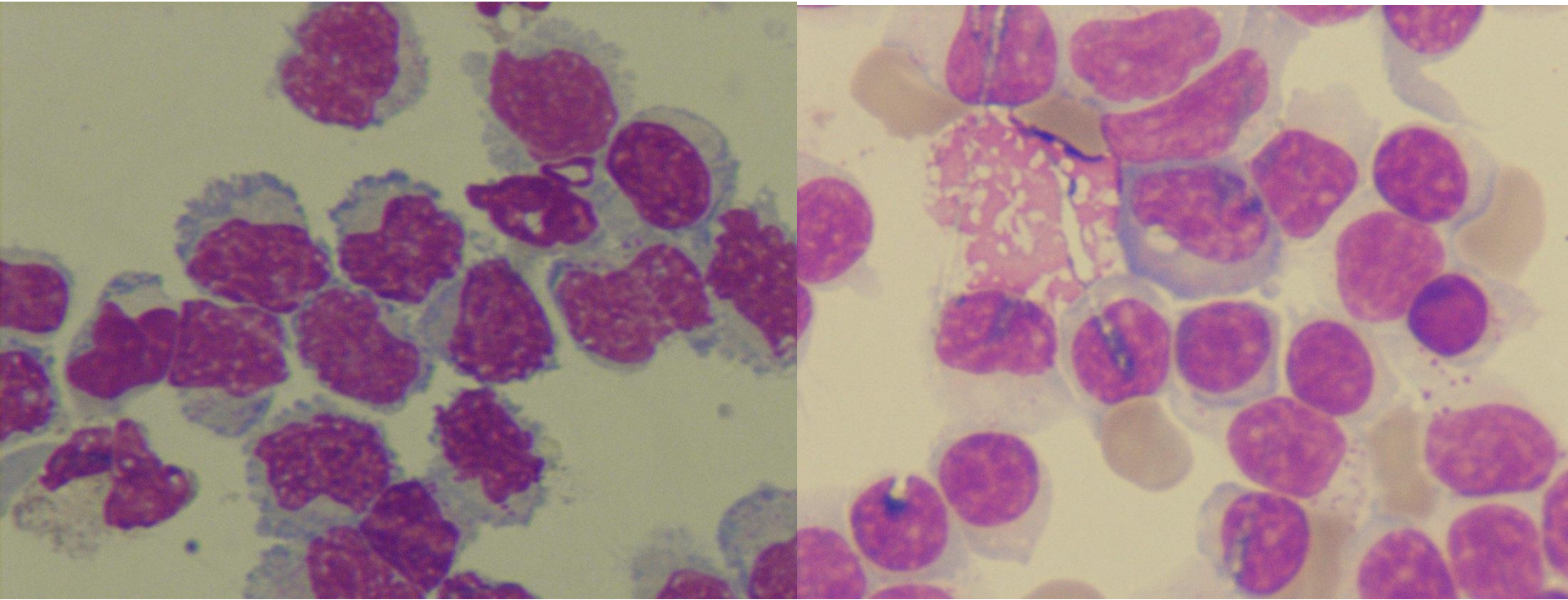
## 38. 35-yr-old man HIV+ with anemia



- A. Plasmablastic lymphoma
- B. Megaloblastic anemia
- C. Parvovirus infection
- D. HHV-8 infection
- E. Large cell lymphoma

39. 40-yr-old man with fever, headache and stiff neck for 1 m

CSF cytospin

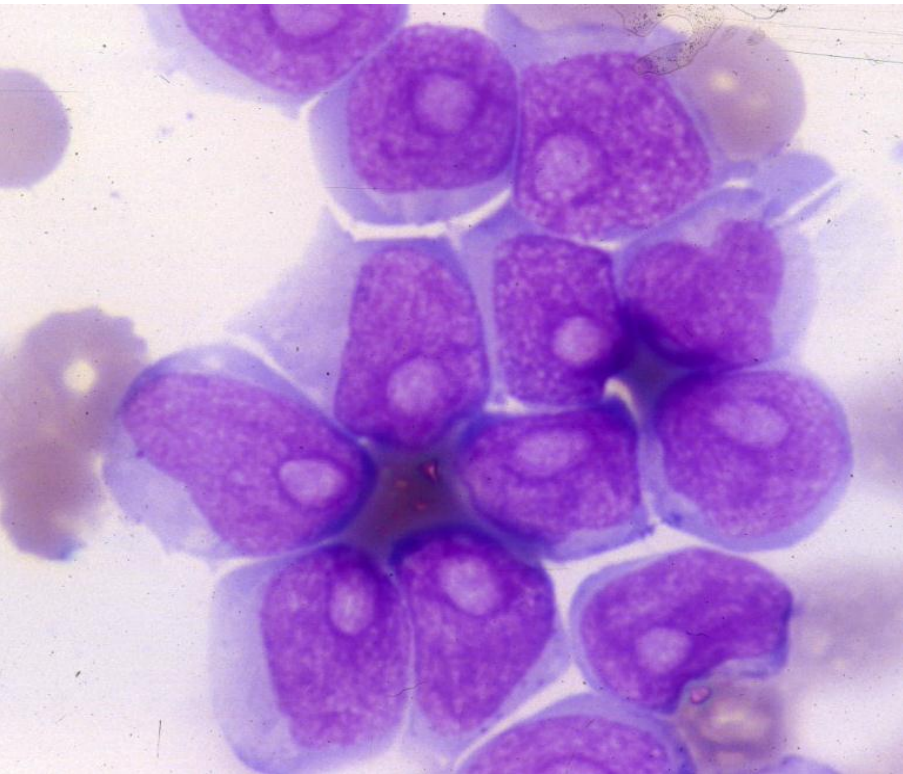


A. TB meningitis  
C. Metastasis  
E. Viral meningitis

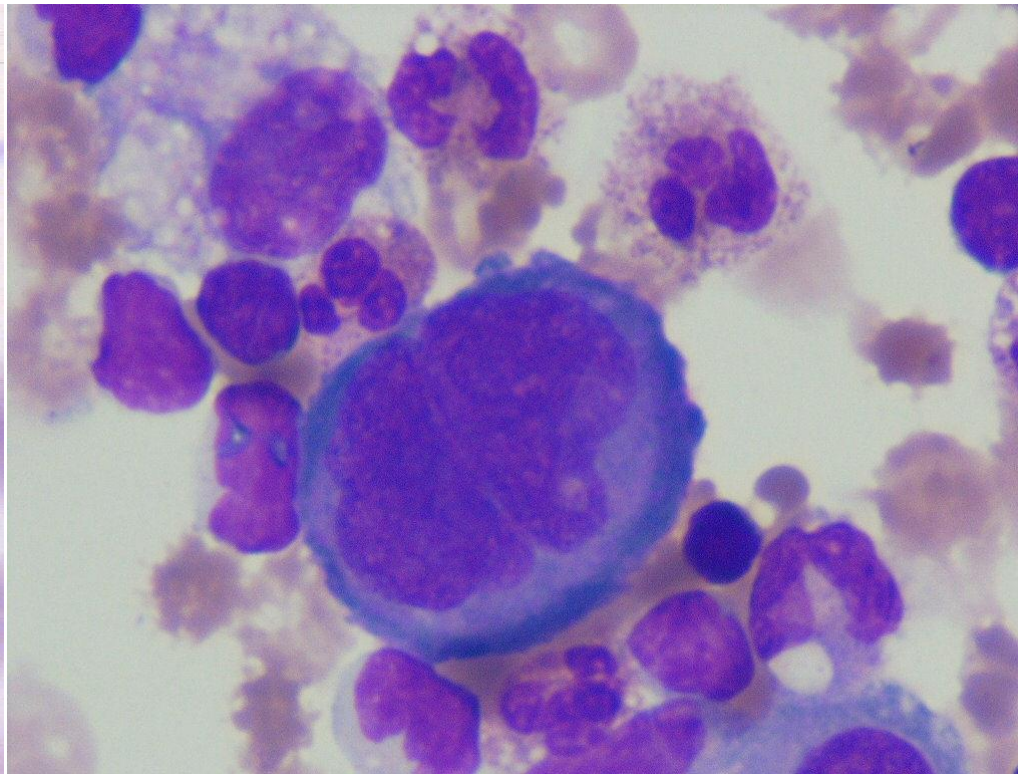
B. Lymphomatous meningitis  
D. Primary CNS lymphoma



# Malignancy cells

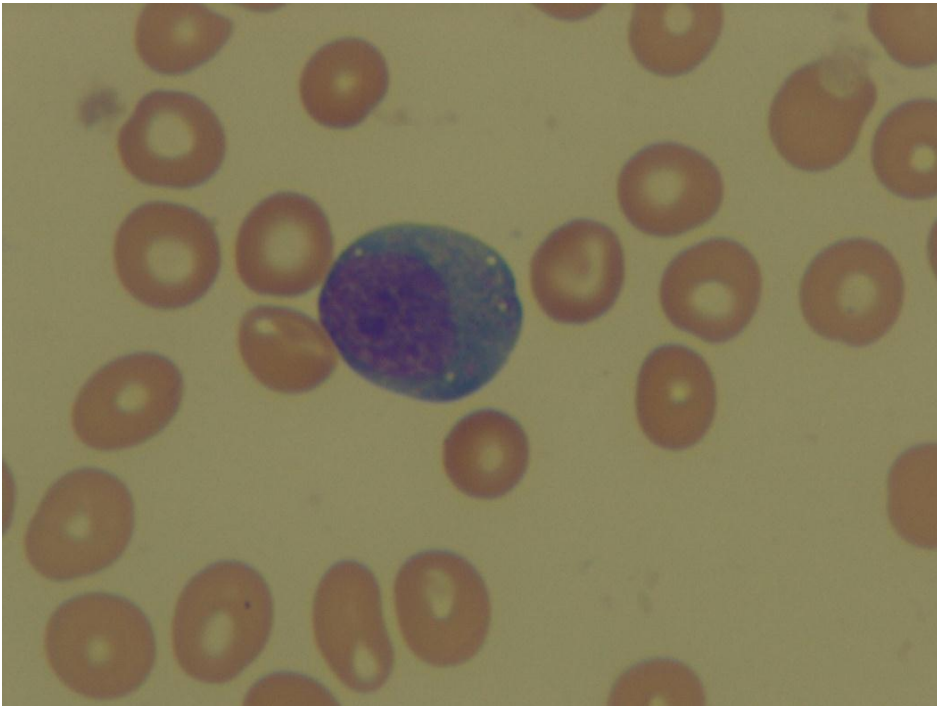


**Lymphoma**



**Metastasis**

## 40. A 16-yr-old man with fever and petechiae

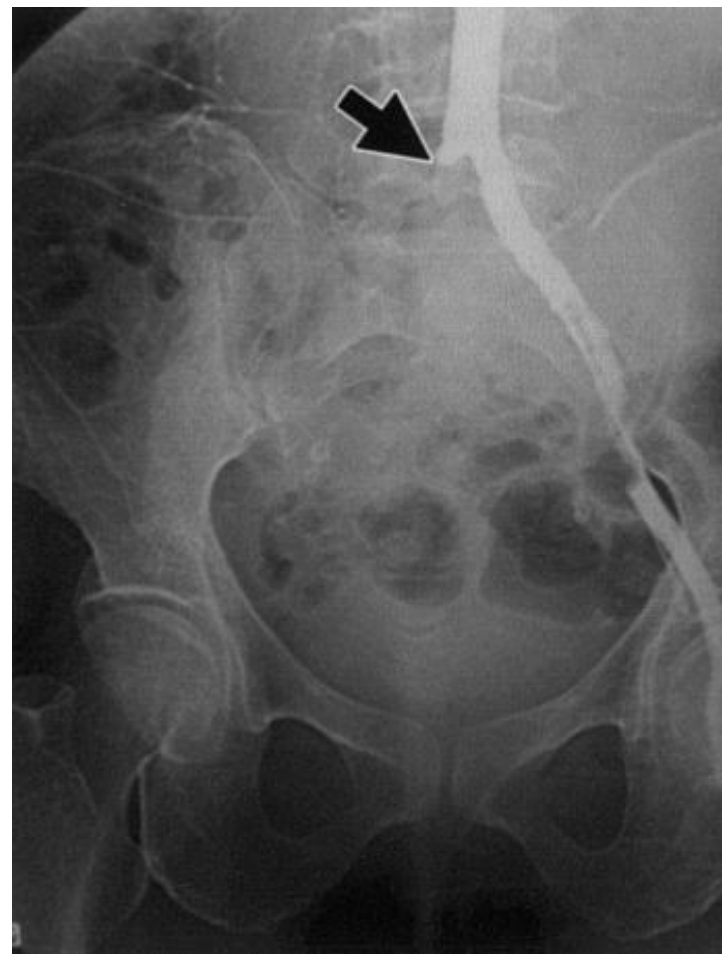


- A. Acute monoblastic leukemia
- B. Acute promyelocytic leukemia
- C. Acute lymphoblastic leukemia
- D. Plasma cell leukemia
- E. Dengue virus infection

41. A 30-yr-old, a known case of  $\beta$ -thalassemia/Hb E, with a chronic leg ulcer of left leg for 6 months.

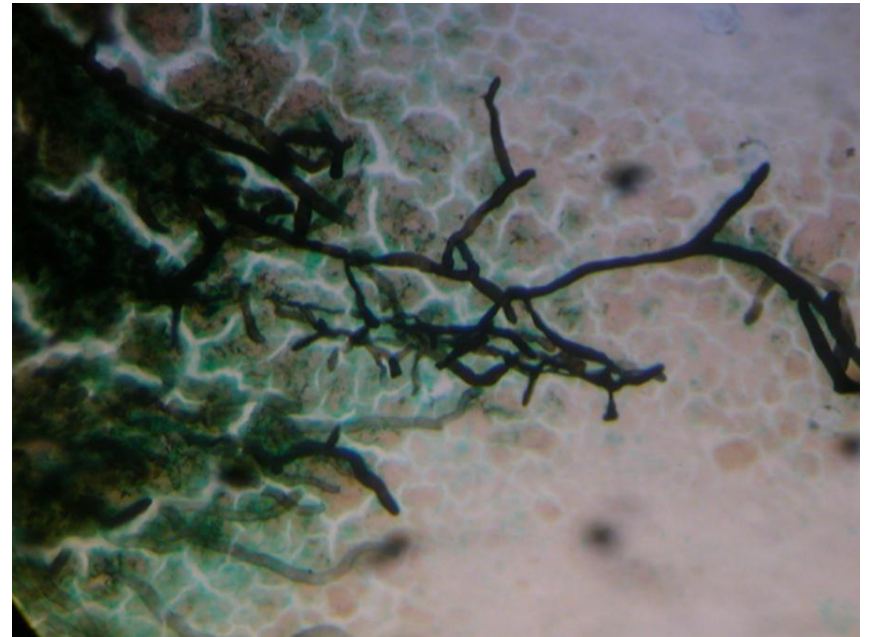


- A. Primary skin lymphoma
- B. Takayasu's vasculitis
- C. Wegener's granulomatosis
- D. Aspergillosis
- E. Human Pythiosis

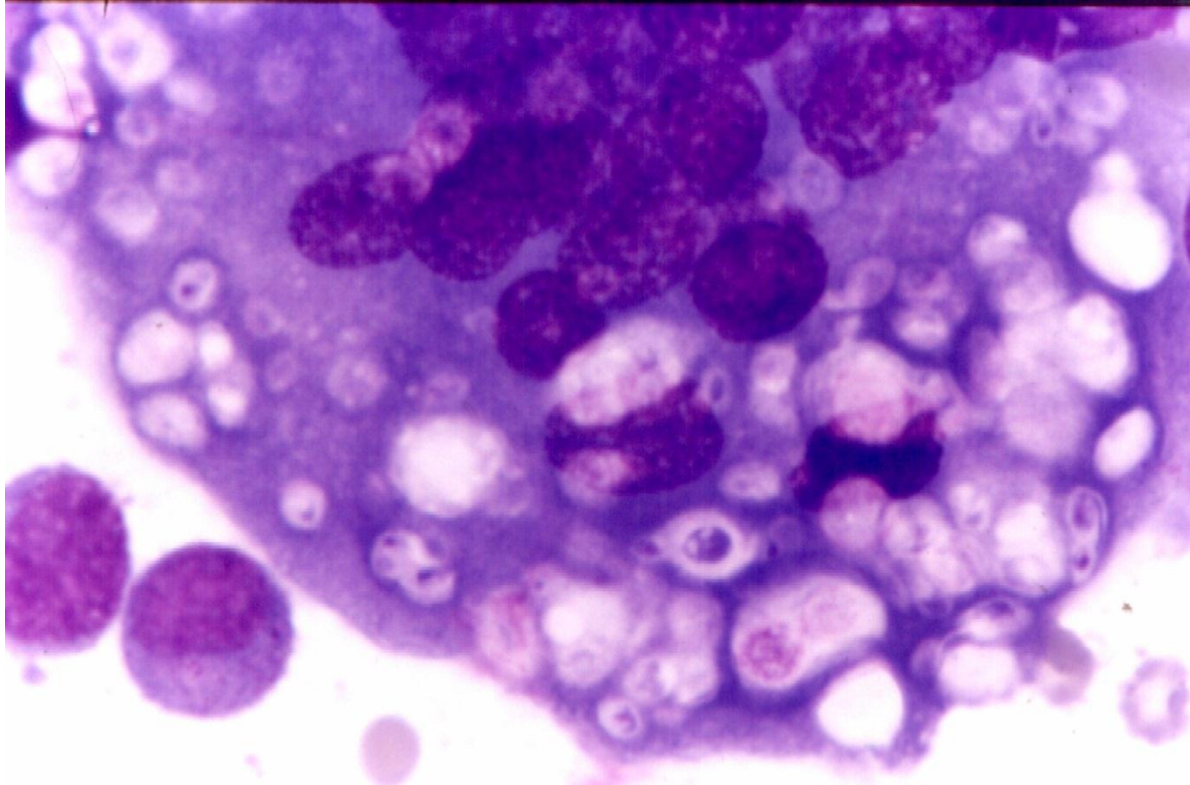




# Phythiosis

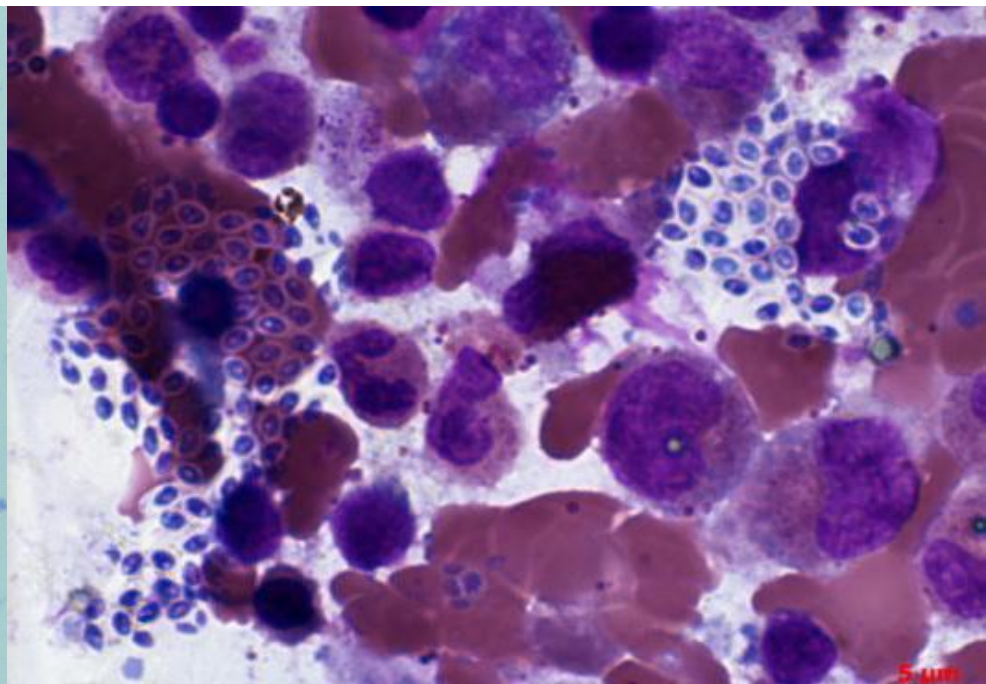
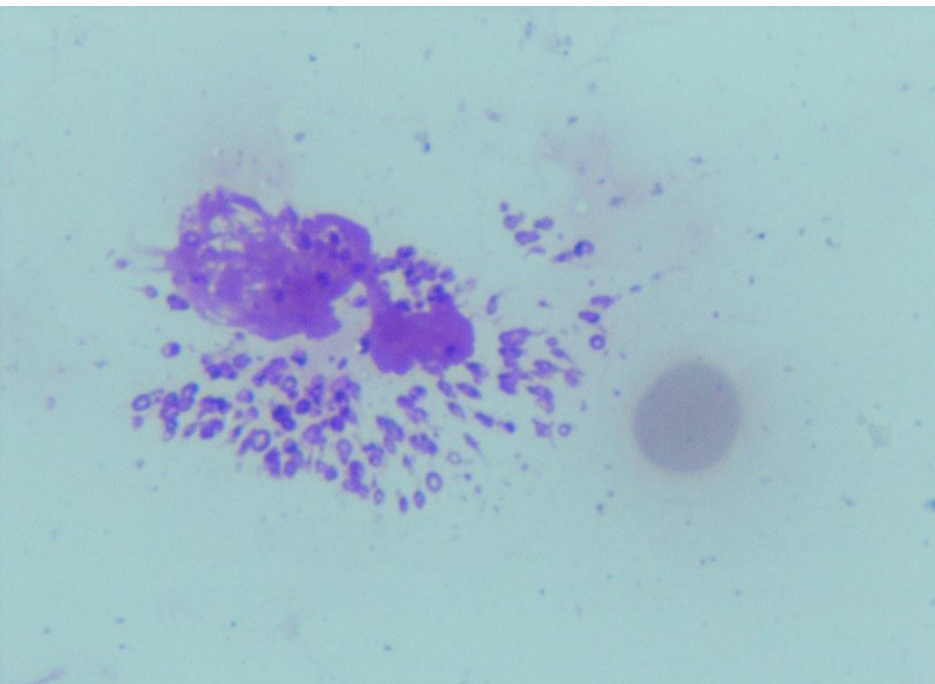
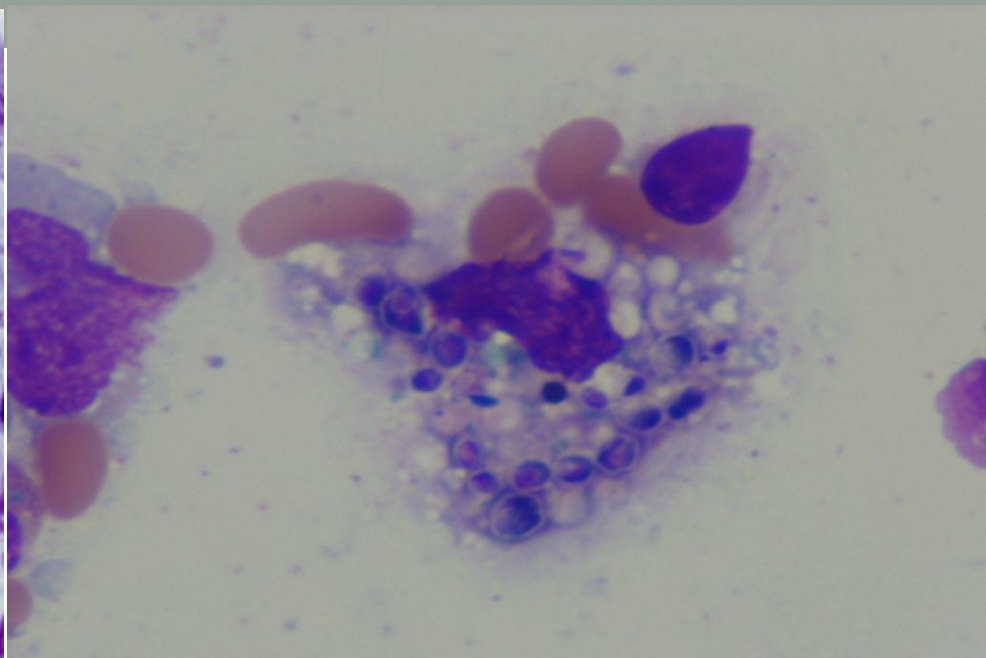
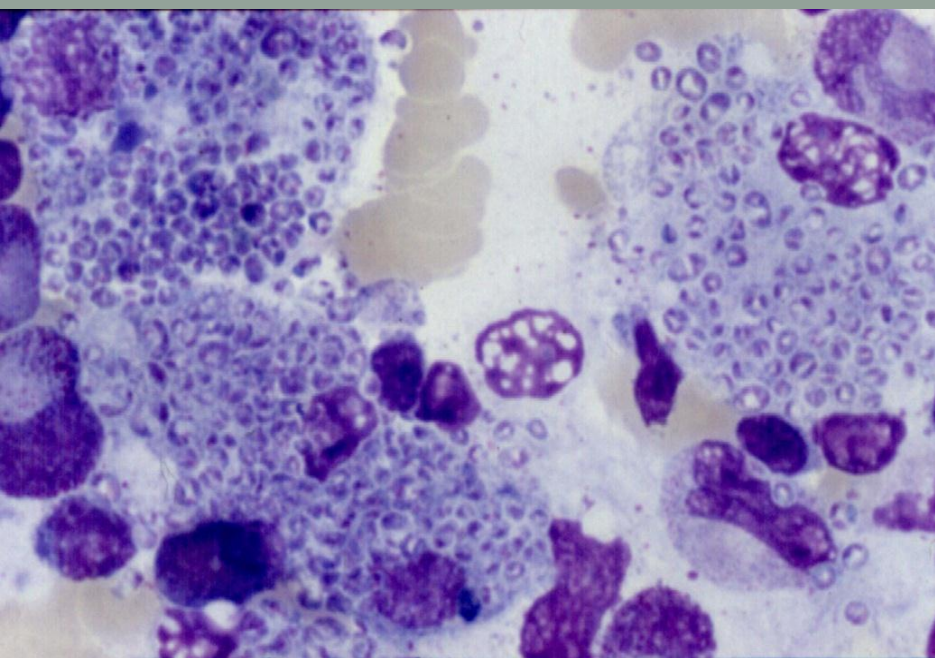


42) ชายอายุ 40 ปี HIV positive with prolonged fever

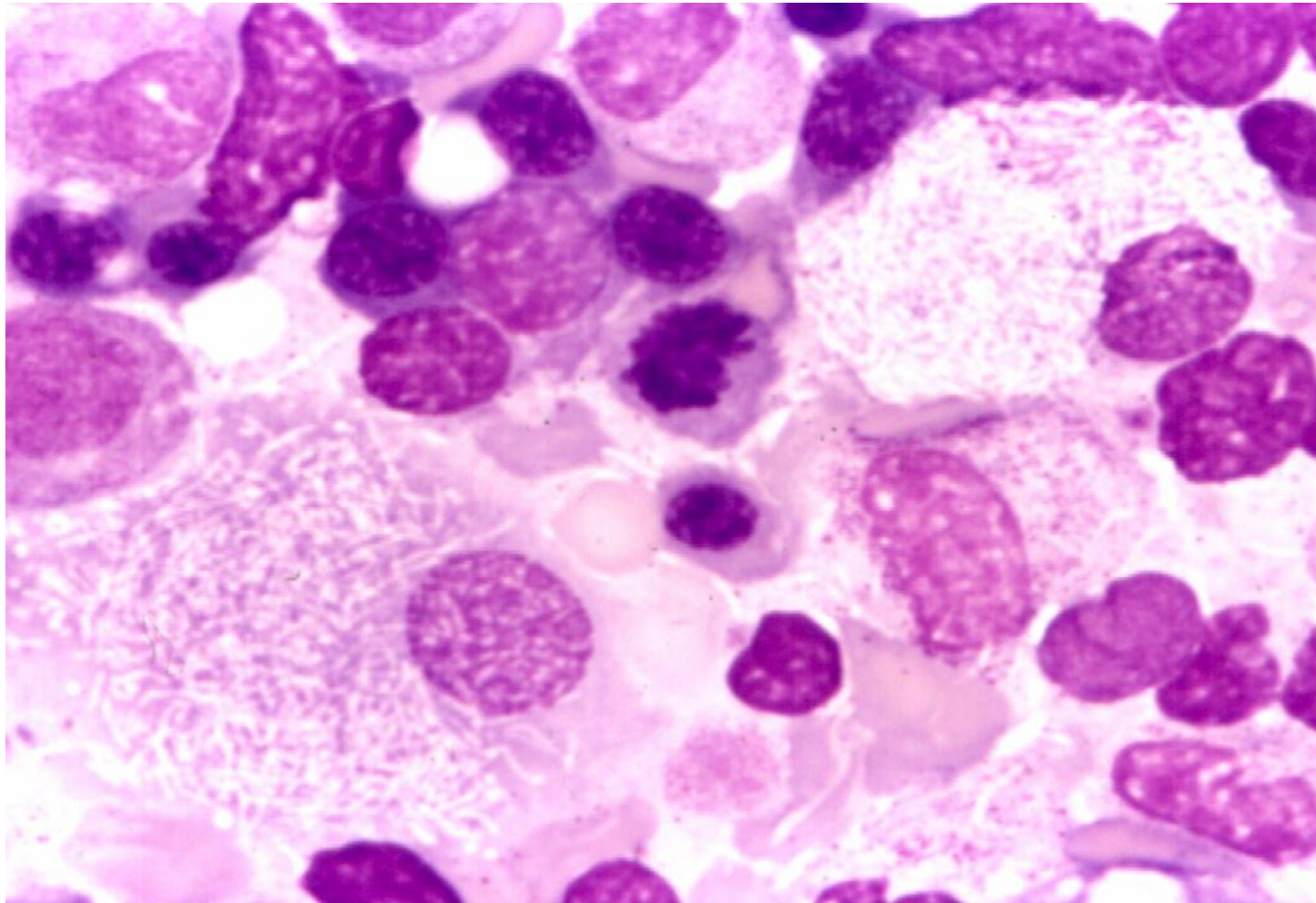


- A. Histoplasmosis
- B. Penicilliosis
- C. Cryptococcosis
- D. Leishmaniasis
- E. Microsporidiosis



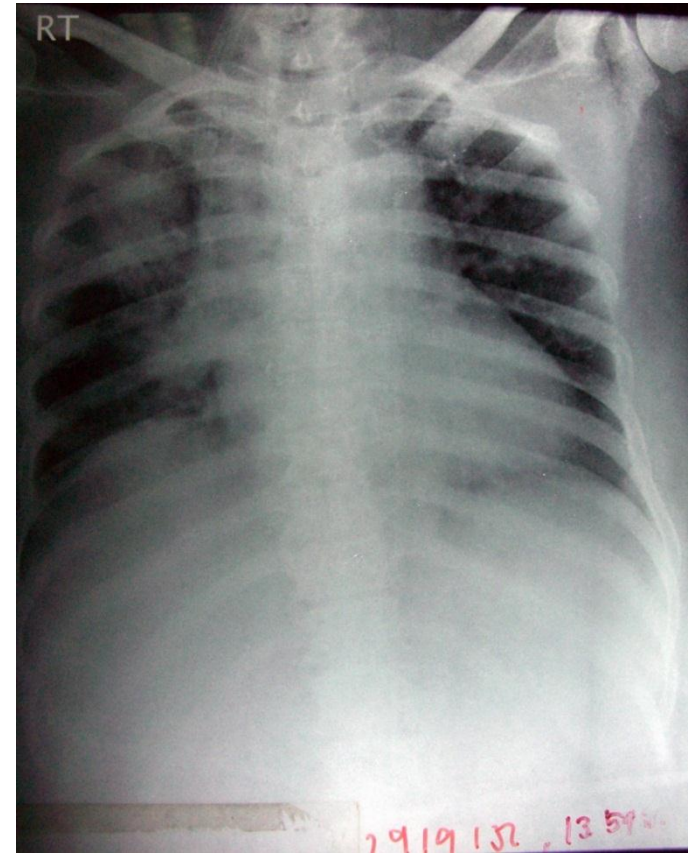


# *Mycobacterium* infection



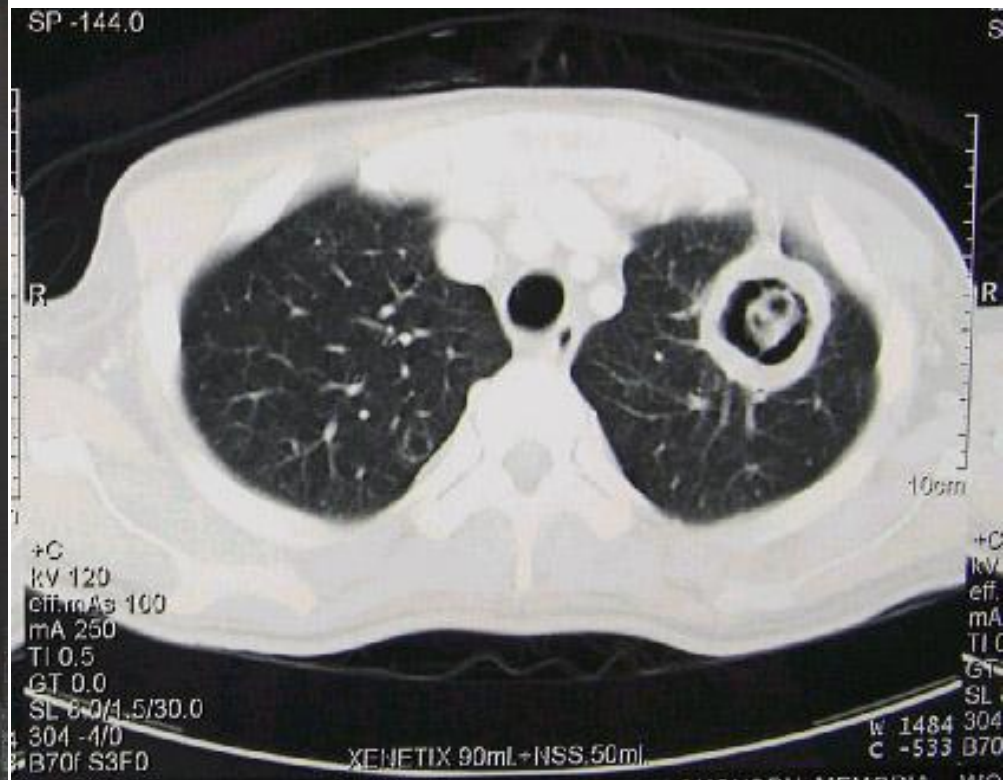


## 43. A 30-yr-old man receiving ALL induction



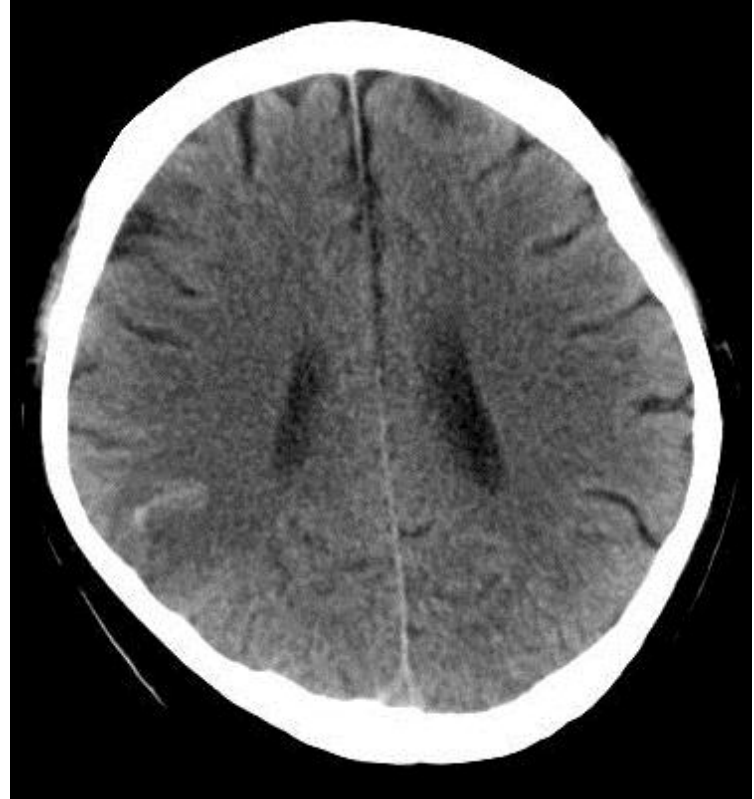
- A. Aspergillosis
- B. Candidiasis
- C. Nocardiosis
- D. *Pseudomonas* sepsis
- E. Leukemic infiltration

# Pulmonary aspergillosis



Crescent

# CNS Aspergillosis



Minimal enhancement due to low immunity

**THANK YOU FOR YOUR  
ATTENTION**

---

**See you next year**  
**[www.cumedicine.org](http://www.cumedicine.org)**